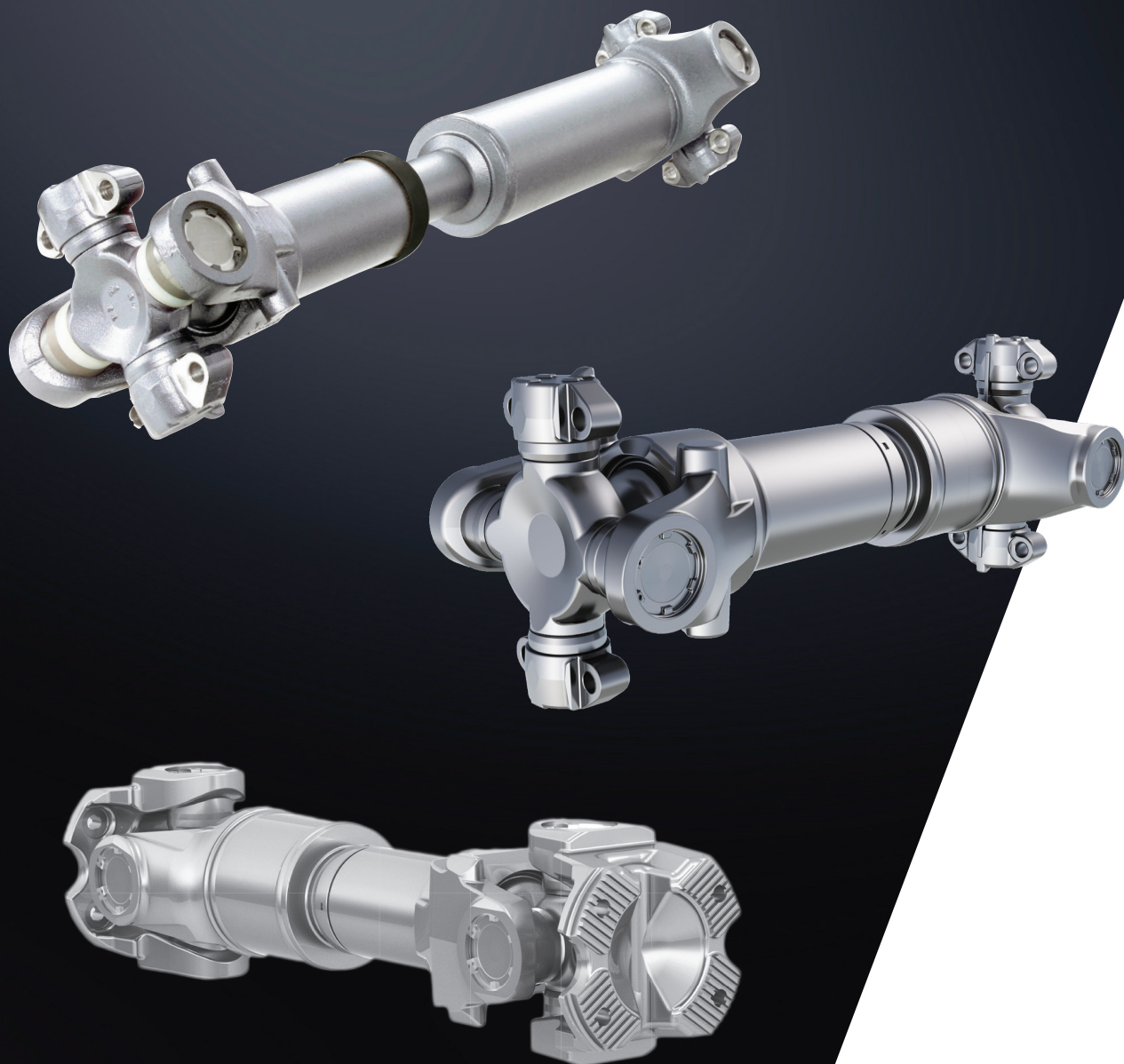


RPL SERIES DRIVELINE PARTS MANUAL



Meritor

**FOR
A WORLD
THAT'S
ALWAYS ON™**

IMPORTANT INFORMATION

AFTERMARKET PARTS WARRANTY

We warrant all new parts for one year from date of shipment to the buyer against defective material or workmanship (but not against damage caused by accident, abuse or improper installation, maintenance or repair) when such parts are used on vehicles the specifications of which have been approved by our Engineering Department.

As the exclusive remedy under this warranty, we will, at our option, repair or replace such parts free of charge, or take back the nonconforming parts and refund the monies paid by buyer for such parts, if found on examination by us to be nonconforming and if necessary return charges are prepaid.

If it is necessary to return any parts under this warranty, buyer agrees not to make any deduction on account thereof from remittances on current accounts while claims are in the process of disposition. Any expense incurred without our consent for repairs or replacement will not be allowed.

THIS WARRANTY IS EXPRESSLY IN LIEU OF ALL OTHER WARRANTIES OR CONDITIONS, EXPRESS, IMPLIED OR STATUTORY, INCLUDING ANY IMPLIED WARRANTY OF MERCHANTABILITY OR FITNESS FOR PARTICULAR PURPOSE. IN NO EVENT SHALL SELLER BE LIABLE FOR INCIDENTAL OR CONSEQUENTIAL DAMAGES OF ANY NATURE.

Only genuine Meritor replacement parts are covered by this aftermarket parts warranty.

DISCLAIMER

Information contained in this publication is in effect at the time the publication was approved for printing and is subject to change without notice or liability. Meritor, reserves the right to revise the information presented or discontinue the production of parts described at any time.

Manufacturers names, part numbers, symbols or other references appearing in this catalogue are used for reference for order of goods only. Images are also for reference only and not to scale.

TRADEMARK

The designated trademarks are registered marks of their respective owners and Meritor and its affiliates are not commercially connected, affiliated, or associated with any of the owners of such marks. The Meritor products presented herein are not endorsed or authorised by any of the trademark owners.

COPYRIGHT

All rights reserved. The Meritor and Euclid logo(s) or any part or layout of the catalogue cannot be printed or reproduced without written authorisation from Meritor.



Found an error?

If you detect any errors in this catalogue, please let us know.

We want to ensure the information we publish is as accurate as possible. We appreciate your help in making this happen.

Please forward your enquiries to:

Email: cvaau.sales@meritor.com

Phone: (03) 8353 6050

INDEX

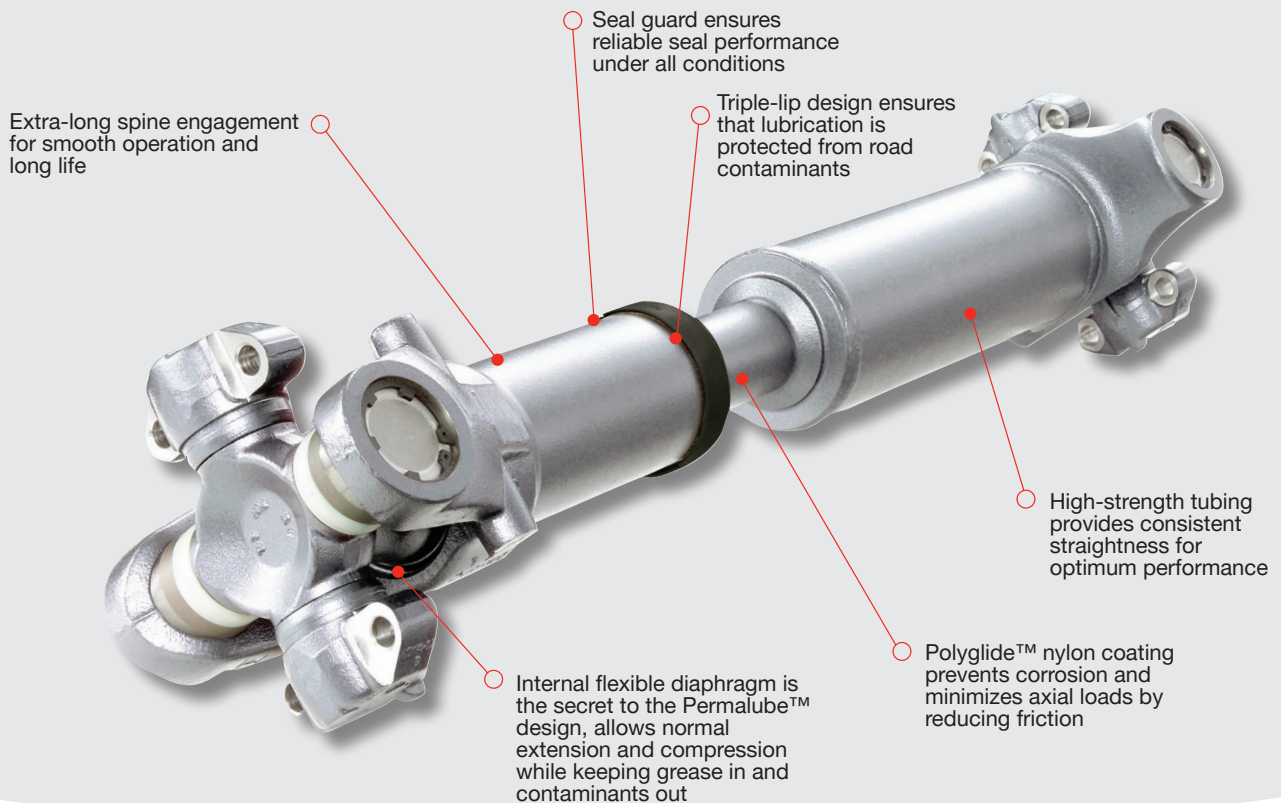
MERITOR® DRIVELINE QUICK REFERENCE GUIDE

Intro - Permalube™ RPL Series Driveline 4 - 5
RPL 20 Interaxle Driveline6
RPL 25 Main Driveline7
RPL 35 Heavy Duty Driveline8
RPL Option Yoke Reference and Transmission9
Additional Required Parts10

PERMALUBE™ RPL SERIES DRIVELINES

ROCKWELL PERMANENTLY LUBRICATED (RPL) BACKED BY DRIVEFORCE™

DriveForce™ is Meritor's field support team handling your commercial vehicle needs: cradle to grave. It serves the Australian market with a combination of sales, service and aftermarket support. With one of the broadest portfolios of commercial vehicle products, team members offer a total vehicle perspective, making them valued experts in the industry. DriveForce is experienced, equipped and positioned throughout Australia to support customers in all facets of commercial vehicle operations.



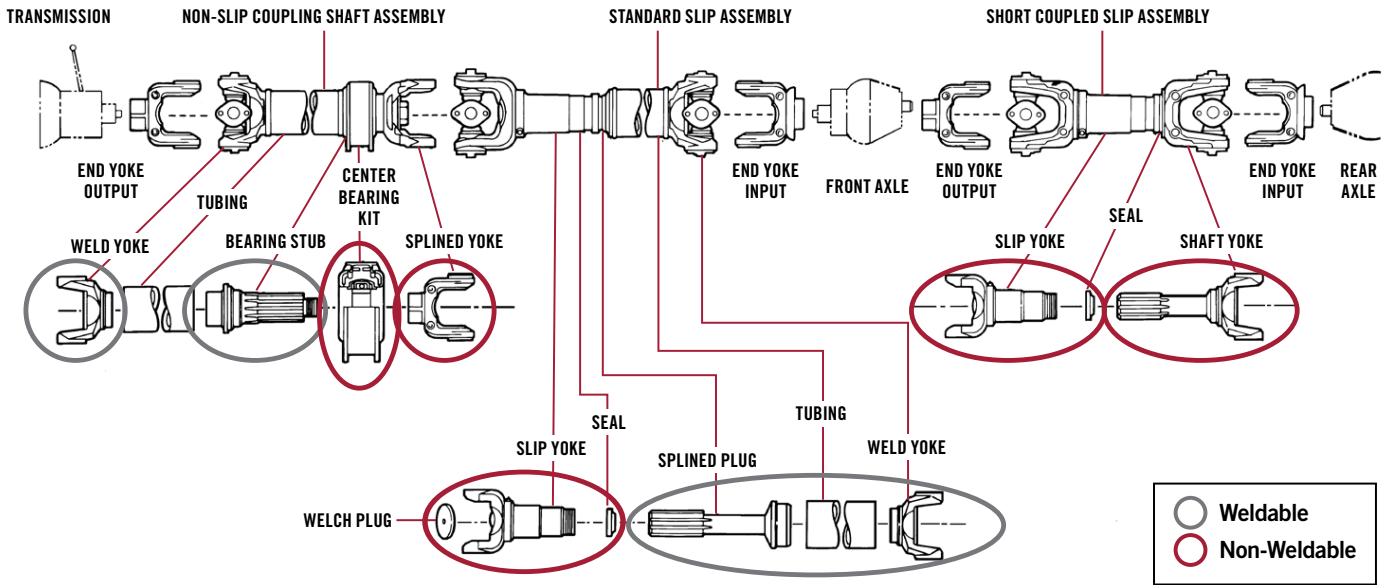
BACKED FEATURES

- Designed specifically for the needs of line-haul trucking applications
- Simple bolt-together driveline assembly provides the ultimate in easy service
- Bolts with “Patch Lock” feature assures a secure connection for life
- Both U-joint and slip section are sealed and greased for life which reduces operating costs
- A “first” in highway U-joints - double-row needle bearings provide optimum bearing alignment and longer life
- U-joint features nylon thrust washers that eliminate metal-to-metal contact to prevent wear
- Patented U-joint snap ring retention feature correctly positions U-joints for lifetime fit

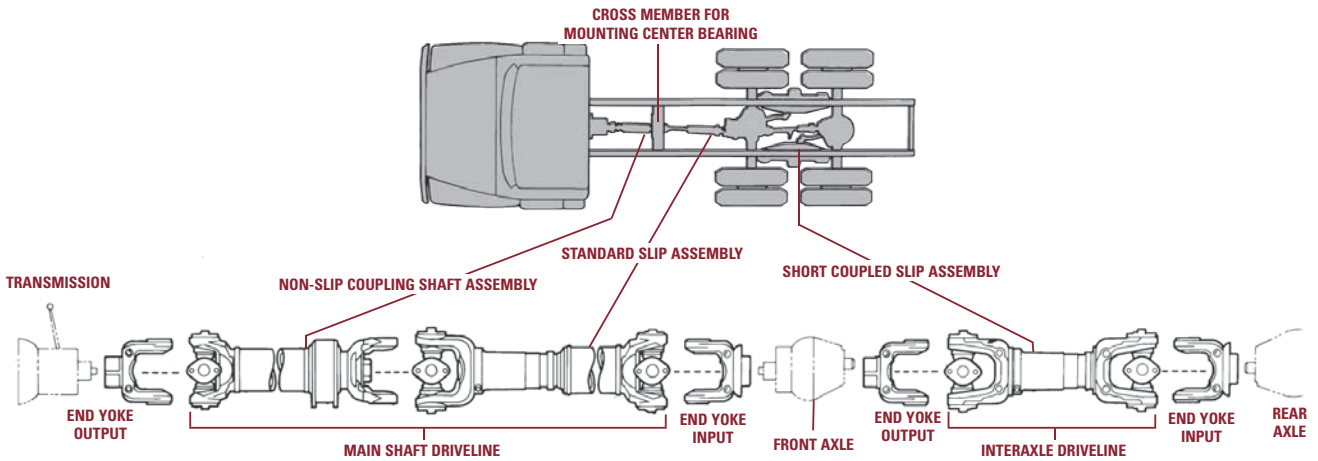
PERFORMANCE ADVANTAGES

- Proven longer U-joint life on today's gear fast/run slow drivetrains
- The complete driveline is permanently lubricated and sealed for life
- Permanent lubrication reduces both operating and maintenance costs
- Delivers significantly higher torque capacities

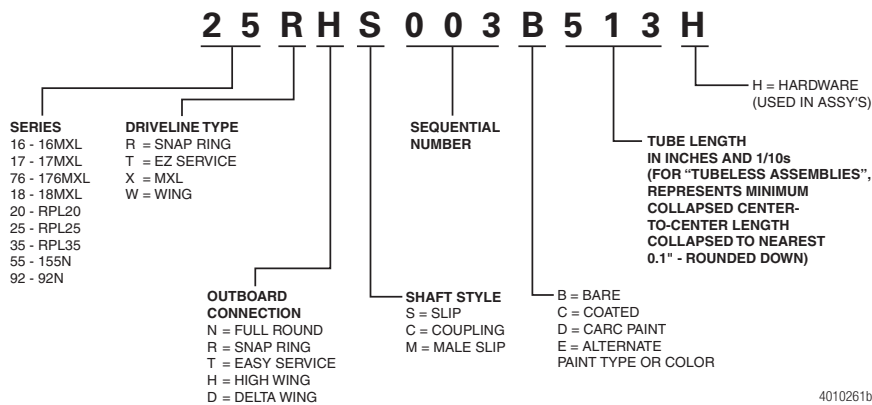
DRIVELINE I.D & PART NUMBER I.D



DRIVELINE COMPONENTS



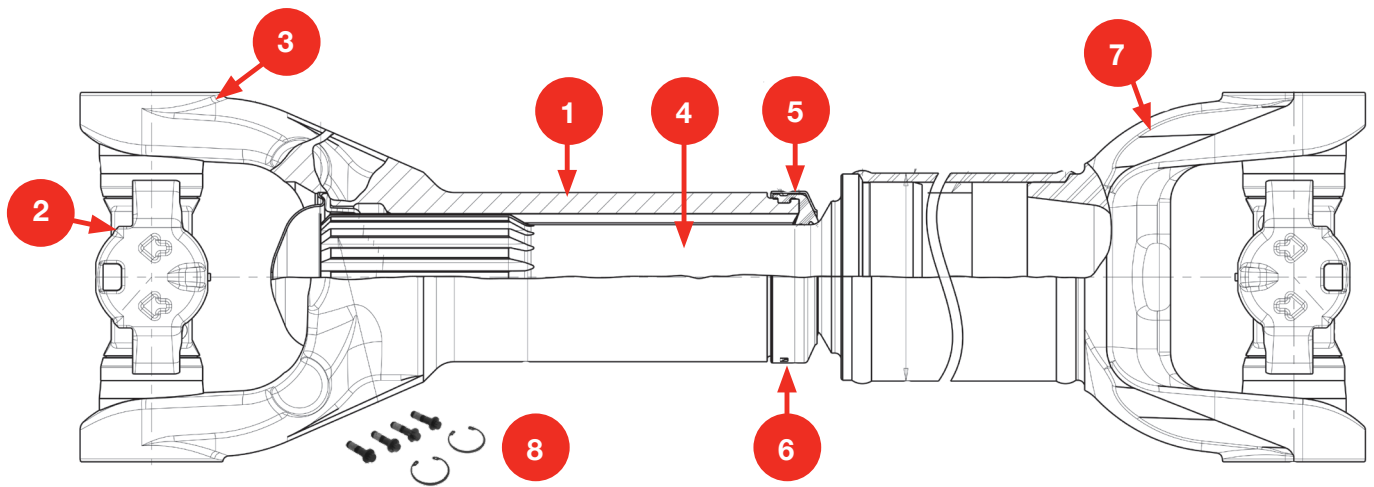
TERMINOLOGY



4010261b

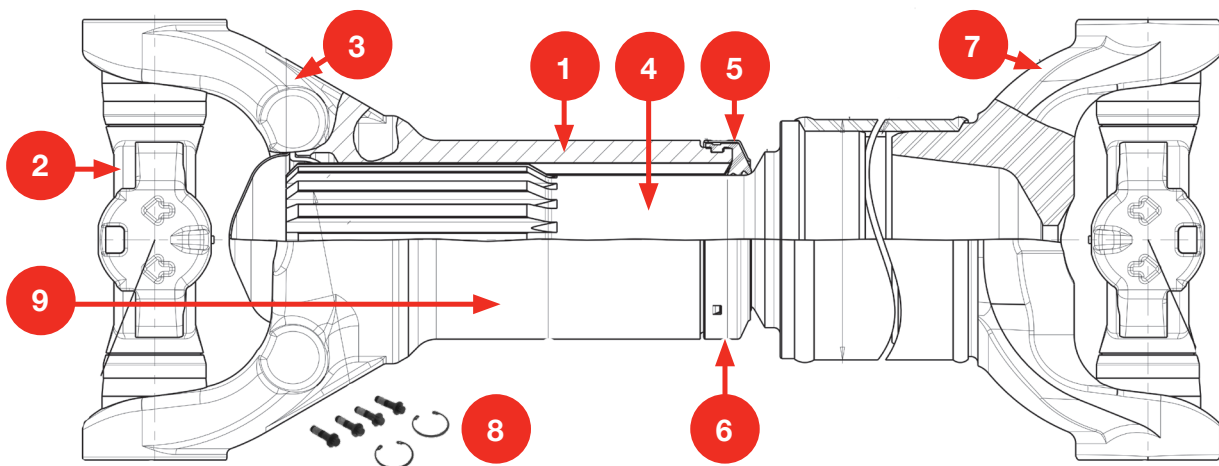
Meritor Driveline Preventive Maintenance Manual refer to MM-96147

RPL 20 INTERAXLE DRIVELINE



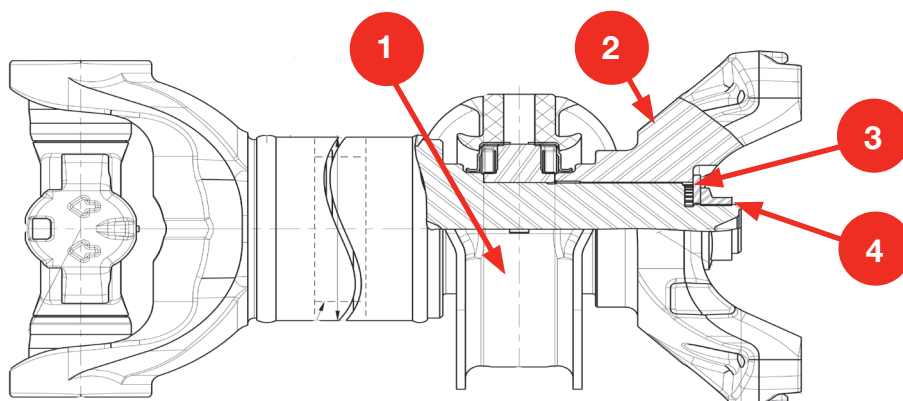
ITEM NO	MERITOR PART NUMBER	DESCRIPTION	PER UNIT	
1	Refer to Spec Sheet	Complete Driveline Assembly	1	
2	CP20RPLS1	Universal Joint includes Patch Bolts & Cir Clips	2	
3	20RLS40-2A1S*	Slip Yoke Assembly	1	
4	PS401661*	Spline Plug	1	
5	SERUR32-7*	Dust Seal	1	
6	DEFR53-5*	Deflector	1	
7	20RYSM606	Weld End Yoke	1	
7	20RYSM607	Weld End Yoke	1	
3, 4, 5, 6	20RPLSLIP	Slip and Stub Assembly	1	
8	KIT RPL25 20	CSC82052	Patch Bolts RPL 20 & 25 (Qty 4)	2
		RR11R36	Snap Ring (Qty 4)	

RPL 25 MAIN DRIVELINE



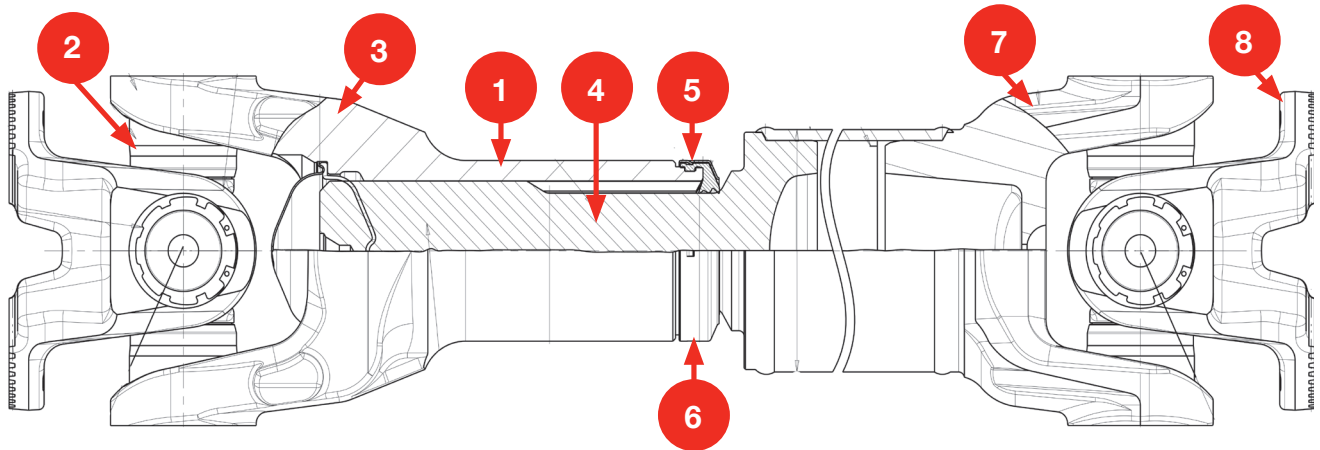
ITEM NO	MERITOR PART NUMBER	DESCRIPTION	PER UNIT	
1	Refer to Spec Sheet	Complete Driveline Assembly	1	
2	CP25RPLS1	Universal Joint includes Patch Bolts	2	
3	25RLS481A 1S	Slip Yoke Assembly	1	
4	PS481638*	Spline Plug	1	
5	SERUR40-21*	Seal Dust	1	
6	DEFR61 1*	Deflector	1	
7	25RY68-3	Yoke-Weld	1	
8	CSC82052	Patch Bolts RPL 20 & 25	8	
9	25RPLSLIP	Slip and Weld Stub Assembly (includes 3, 4, 5, 6)	1	
10	KIT RPL25 20	CSC82052	Patch Bolts RPL 20 & 25 (Qty 4)	2
		RR11R36	Snap Ring (Qty 4)	

RPL 25 CENTRE BEARING OPTION



ITEM NO	MERITOR PART NUMBER	DESCRIPTION	PER UNIT
1	HCB214	Centre Bearing Assembly	1
2	25WYSC38-11	Coupling Yoke	1
3	WAR21-1	Washer	1
4	1227Z936	Nut	1

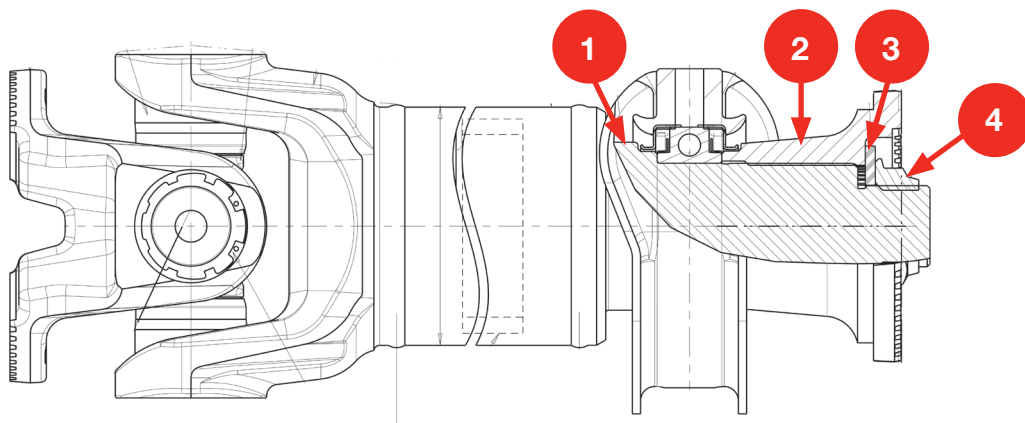
RPL 35 HEAVY DUTY DRIVELINE



ITEM NO	MERITOR PART NUMBER	DESCRIPTION	PER UNIT
1	Refer to Spec Sheet	Complete Driveline Assembly	1
2	CP35RPLS	Universal Joint includes Snap Rings	2
3	3XRLS48-1A*	Slip Yoke Assembly	1
4	PS48 16 38*	Spline Plug	1
5	SERUR40 21*	Dust Seal	1
6	DEFR61 1*	Deflector	1
7	3XRY76-1	Yoke-Weld	1
8	3XRF2	Flange Yoke	2
3, 4, 5, 6	35RPLSLIP	Slip and Stub Assembly	1
9	KT-35BNW	Patch Bolt Kit (includes 4 bolts, nuts & washers)	2

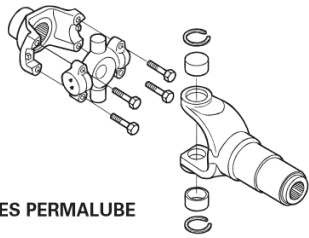
PLEASE NOTE: Anytime the universal joint is disconnected, new bolts, washers and nuts from kit KT35BNW must be used during re-assembly.

RPL 35 CENTRE BEARING OPTION



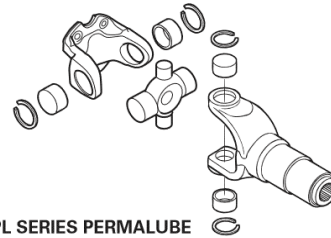
ITEM NO	MERITOR PART NUMBER	DESCRIPTION	PER UNIT
1	CB2100203XSA	Centre Bearing Assembly	1
2	5WCSC45-4	Coupling Yoke	1
3	WAR29 2	Washer	1
4	40X1233	Nut	1

MERITOR RPL OPTION YOKE REFERENCE AND TRANSMISSION



RPL SERIES PERMALUBE
RPL20, RPL25 AND RPL25SD SERIES

4001791a



RPL SERIES PERMALUBE
RPL35 AND RPL35SD SERIES

4011778a

CARRIER	YOKE TYPE
RT140/145 14X Forward	
25WYS38-13A	Forward Input Yoke RPL 25
20WYS32-2P	Output Yoke RPL 20
RT140/145 14X Rear	
20WYS32-2A	Rear Input Yoke RPL 20
RT160 Forward	
25WYS38-13A	Forward Input Yoke RPL 25
5WCS38-45A1	Forward Input Yoke RPL 35
20WYS32-2P	Output Yoke RPL 20
RT160 Rear	
20WYS38-3A	Rear Input Yoke RPL 20
RT180/185 & 380 Forward	
25WYS38-8A	Forward Input Yoke RPL 25
5WCS38-47A	Forward Input Yoke RPL 35
25WF3C	Output Yoke RPL 25
20WYS32-2P	Output Yoke RPL 20
RT180/185 Rear	
20WYS38-8A	Rear Input Yoke RPL 20
RT380 Rear	
20WYS32-2A2	Rear Input Yoke RPL 20

TRANSMISSION	YOKE TYPE
RTLO18718	
25WYS44-2A	10 Spline Output RPL 25
RTLO22918	
25WYS45	54 Spline Output RPL 25
5WCS451	54 Spline Output RPL 35 ISO

ADDITIONAL REQUIRED PARTS

To maintain product integrity, it is essential that Genuine Meritor bolts or screws are used to replace ANY removed when inspecting OR during installation of a NEW Meritor RPL Universal Joint (RPL20R, RPL25 & RPL35). *Refer to Maintenance Manual MM-96147 for further information.

UNIVERSAL JOINTS

MERITOR PART NUMBER	DESCRIPTION
CP20RPLS1	RPL 20 Universal Joint
CP25RPLS1	RPL 25 Universal Joint
CP35RPLS	RPL 35 Universal Joint

CENTRE BEARINGS

MERITOR PART NUMBER	DESCRIPTION
HCB214	RPL 25 Centre Bearing Assembly
CB2100203XSA	RPL 35 Centre Bearing Assembly

HARDWARE

MERITOR PART NUMBER	DESCRIPTION	
CSC82052	Patch Bolts RPL 20 & 25	
KT-35BNW	Patch Bolt Kit Including Bolts RPL 35 ISO Flange	
1227Z936	RPL 25 Coupling Yoke Nut	
WAR21 1	RPL 25 Coupling Yoke Washer	
40X1233	RPL 35 Coupling Yoke Nut	
WAR29 1	RPL 35 Coupling Yoke Washer	
RPLLUBE50	RPL Grease	
KIT RPL25 20	CSC82052	Patch Bolts RPL 20 & 25 (Qty 4)
	RR11R36	Snap Ring (Qty 4)



Meritor Heavy Vehicle Systems Australia
50 Calarco Drive
Derrimut, VIC 3026
AUSTRALIA

(03) 8353 6050

meritorpartsexpress.com

CMCAT019 - RPL DRIVELINE PARTS MANUAL 0224
Produced in AUS 02/24
©2024 Cummins Inc.